



TAKE  
CONTROL  
INITIATIVE ♀

2021

Annual Report

---



## Our Mission

Take Control Initiative (TCI) works to remove barriers and increase access to birth control in Tulsa County.

## Our Vision

TCI envisions a community in which all people have equitable access to birth control, ultimately promoting community health and economic opportunity.

# ABOUT TAKE CONTROL INITIATIVE

---

# TCI DRIVES CHANGE

by breaking down  
social, economic,  
and clinical barriers  
to access for  
contraception

## OPERATING FRAMEWORK

Since 2010, TCI has worked to ensure individuals have the resources and information to decide if and when they want to become pregnant in an effort to **honor and support their autonomy and safety**. In coalition with a strong network of partners, **TCI builds sustainable bridges between community and health centers.**

## TO CREATE THIS REALITY, TCI PROMOTES THE FOLLOWING CONDITIONS FOR TULSA:

- **Everyone has access to all birth control options** and is supported in self-advocating for their patient rights.
- Health centers and community-based organizations are supported in implementing practices that **affirm dignity, trust and respect**.
- Systemic barriers, including financial, transportation, language and logistical **barriers to health center access are removed**.

# Benefits of Access

CONTRACEPTIVE ACCESS IN A WOMAN'S EARLY YEARS INCREASE HER ANNUAL EARNINGS IN HER EARLY 40'S BY 11% <sup>(1)</sup>

CONTRACEPTIVE ACCESS BY AGE 20 REDUCE THE PROBABILITY THAT WOMEN (AGED 16-44) LIVED IN POVERTY BY 8% <sup>(1)</sup>

ACCESS TO FEDERALLY FUNDED FAMILY PLANNING PROGRAMS REDUCE THE SHARE OF CHILDREN LIVING IN POVERTY BY 7.4% <sup>(1)</sup>

1. "UNINTENDED PREGNANCY IN THE UNITED STATES," GUTTMACHER INSTITUTE, JANUARY 2019. GUTTMACHER.ORG/FACT-SHEET/UNINTENDED-PREGNANCY-UNITED-STATES



# WHY TCI COVERS THE COST

---

**EXISTING  
BARRIERS**

HIGH UP  
FRONT COST

COMMUNITY  
& PROVIDER  
BELIEFS &  
EDUCATION  
NEEDS

ECOSYSTEM OF  
RESOURCE  
SCARCITY

**NEW  
BARRIERS**

FEDERAL  
INSTABILITY OF  
FAMILY  
PLANNING  
FUNDING

LOCAL  
EMPLOYERS  
OPTING OUT OF  
COVERING  
BIRTH CONTROL

RESTRICTIVE  
POLICIES  
ROLLING OUT  
ACROSS THE  
REGION

# PROGRAM ADAPTATIONS

**Online Pharmacy:** In March 2020, TCI began a partnership with RevanRx, an online pharmacy based in Oklahoma City, focused on inclusivity, and licensed to operate across the state. Partner health centers can now fill prescriptions and have them mailed directly to TCI qualifying clients through RevanRx.

**Free Condoms and Emergency Contraception (EC) by Mail:**

Through the RevanRx partnership, TCI now offers free condoms by mail across Tulsa County. RevanRx donates the condoms and TCI covers a small shipping fee. For EC, TCI covers all cost. Each package comes with information about other birth control methods and TCI services. In 2022, TCI is scaling these packages to include pregnancy tests as well.



## OUR IMPACT

In 2021, TCI maintained

# 96.6%

of regular clinical access to birth control and expanded access

# 51.2%

decrease in abortions

Tulsa County data from 2009-2017  
*most recent data available*

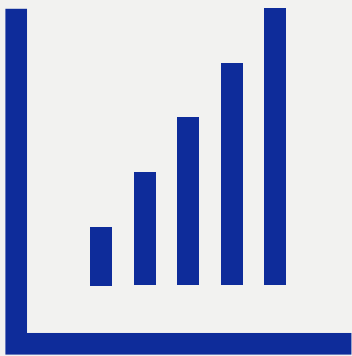
# 57.7%

decrease in the teen birth rate

Tulsa County data from 2009-2020 <sup>(3)</sup>



# OUR 2021 OUTCOMES



## 3,098

people reached  
through **education  
sessions** & TCI  
**Helpline** touchpoints <sup>(4)</sup>

## 4,674

prescriptions of the  
**shot, pill, patch** or  
**ring** provided,  
lasting 3 months <sup>(4)</sup>

## 2,097

**LARC devices**  
provided, lasting 3-12  
years <sup>(4)</sup>

## 4,279

TCI **Resources Packs**  
provided to teens,  
older adolescents  
and adults <sup>(4)</sup>



**199**

**Lyft Rides** to  
family planning  
appointments<sup>(4)</sup>

**4,680**

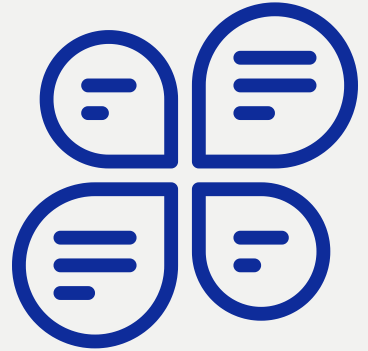
**condoms** discreetly  
delivered<sup>(4)</sup>

**76**

**community  
partners trained**  
to make referrals<sup>(4)</sup>

**34**

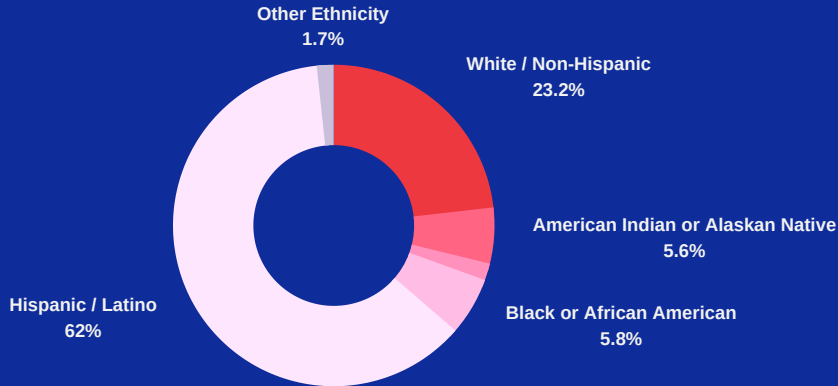
**Metriarch  
partners** across  
the state of OK<sup>(4)</sup>



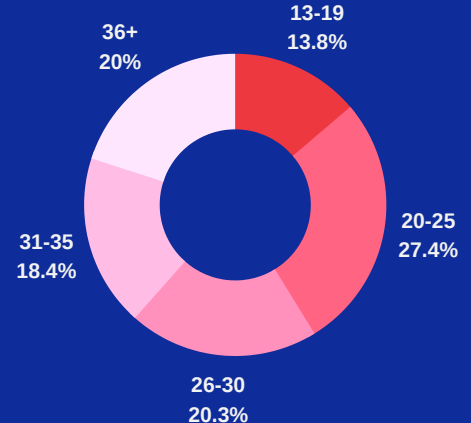
**OUR 2021  
OUTCOMES**

These numbers represent uninsured women choosing IUDs and the implant funded by TCI. They are not reflective of the whole population of women choosing IUDs and the implant.

## RACE & ETHNICITY



## AGE





## CLINIC QUALITY IMPROVEMENT INITIATIVE

In its fourth year, TCI+ ramped up: finalized agreements with all clinic partners, established regular site champion meetings, and accelerated data collection efforts.

**414**

CLINIC STAFF TRAINED IN 2021

**1,227**

CLINICAL STAFF TRAINED 2018-2021

**38**

COLLABORATIVE CLINIC TOUCHPOINTS IN 2021

# 34 PEER HEALTH EDUCATORS ACROSS POSTSECONDARY SPACES IN 2021

In 2021, TCI continued the peer health education program implementing virtual education sessions, resource dissemination on campus, and recruitment and engagement of students.

PHE members receive training in sexual health and leadership content, and receive stipends for participating. The program both supports student-led TCI education and outreach efforts on campuses and provides the students with a career development experience.

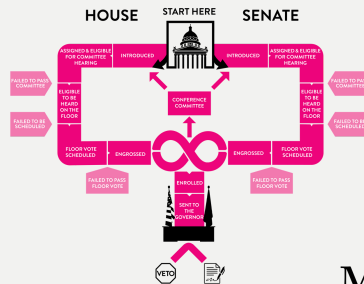


**Metriarch is a statewide data collaborative that aims to normalize and broaden women's health conversations in Oklahoma through data storytelling, resource curation, and interactive outreach events.**

## **THE CORE ACTIVITIES METRIARCH CARRIED OUT IN 2020 INCLUDE:**

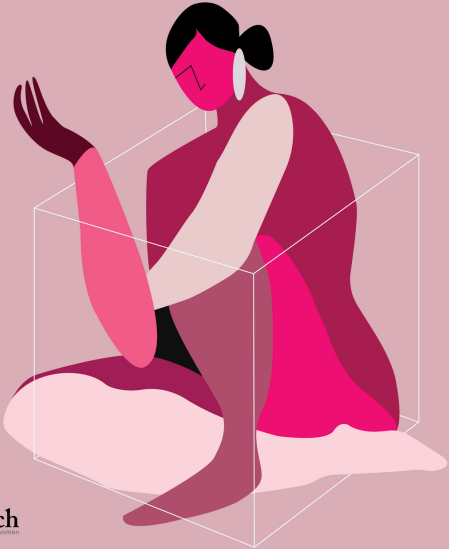
- **The Legislative Tracker platform featured over 50 bills**
- **Fierce Facts Newsletter**
- **Tracking and disseminating data on over 40 indicators related to women's health in OK**
- **Legislative Clearinghouse Calls every Friday throughout session**
- **Centering Racial Equity Throughout Data Integration Toolkit:** Metriarch was featured in the University of Pennsylvania's toolkit for Centering Racial Equity throughout Data Integration.

- "Metriarch's innovative approach is changing the way data can be shared, analyzed, and used to facilitate meaningful conversation and societal change. Their work has empowered the community and helped ensure that the data collected by organizations further the service missions of community collaborators."



# data *lookbook*

Vol. 2



**Metriarch**  
A data haven for Oklahoma women

## DATA LOOKBOOK

The first-ever “Data Lookbook,” a semi-index that featured 43 different health-related indicators across 8 domains related to women's health, was created in the fall of 2019. With each datapoint featuring its own literature review, context-building and advocacy information, the lookbook provides a cohesive, accessible, and convenient tool to equip agencies and advocates on the front line of Oklahoma’s women's health efforts.

Volume II, an updated edition with the latest data was released in winter 2021. Over 800 lookbooks have been distributed since 2019, both volumes are available online as well.

# SOCIAL MEDIA

 @iudecide

 @iudecide

 @TakeControlInitiative



# 372,000

---

In 2021, TCI's social media campaigns reached about **372,000 people in Tulsa**, directing approximately **16,000** individuals to TCI's landing page, and **hundreds** of others to TCI's helpline.

Campaign messages focused on increasing awareness about free clinical services, condom delivery and telehealth services.

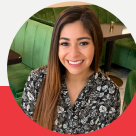
# TCI STAFF



**LAURA BELLIS**  
Executive Director



**MINDY GALOOB**  
Deputy Director



**GABRIELLA LAGORIN**  
Program Director



**JAQUELINE BLOCKER**  
Date & Policy Director



**ALICE BLUE**  
TCI+ Lead Quality  
Improvement Officer



**LATONYA SCOTT**  
TCI+ Quality Improvement  
Officer



**BRANDY HAMMONS**  
Operations & Development  
Manager



**PAOLA ALMANZA**  
Creative Marketing  
Manager



**CANDICE HOLLEY**  
Clinical Training  
Coordinator



**TOMMY YAP**  
Data & Policy Analyst



**MARIA HERNÁNDEZ**  
Education & Outreach Coordinator



# END NOTES

## CITATIONS:

---

(1) Bernstein, A., & Jones, K. M. (Published 2019, September). THE ECONOMIC EFFECTS OF CONTRACEPTIVE ACCESS: A Review of the Evidence (Fact Sheet). Institute for Women's Policy Research. (Author) Retrieved from: <https://iwpr.org/iwpr-issues/reproductive-health/the-economic-effects-of-contraceptive-access-a-review-of-the-evidence/>

(2) Lindberg, L. D., VandeVusse, A., Mueller, J., & Kirstein, M. (Published 2020, June). Early Impacts of the COVID-19 Pandemic: Findings from the 2020 Guttmacher Survey of Reproductive Health Experiences. Guttmacher Institute. (Author) Retrieved from: <https://www.guttmacher.org/report/early-impacts-covid-19-pandemic-findings-2020-guttmacher-survey-reproductive-health>

(3) Oklahoma State Department of Health (OSDH) Maternal & Child Health Service (Author) (Published 2021, November) Oklahoma Teen Birth Report 1996-2020. Retrieved from: <https://oklahoma.gov/content/dam/ok/en/health/health2/aem-documents/family-health/maternal-and-child-health/child-adolescent-health/data-and-evaluation/teen-birth-stats/2021-Oklahoma%20Teen%20Birth%20Report%201996-2000.pdf>

(4) TCI-funded LARC and total LARC at participating health centers are tracked in the TCI data system based on quarterly intake reports, 2021. Accessed August 2022.

---



What we do is  
important than  
what we say or  
what we say we  
believe.

-bell hooks

# OUR SUPPORTERS

**GEORGE KAISER  
FAMILY FOUNDATION**

*A supporting organization of Tulsa Community Foundation*



CHARLES AND LYNN  
**Schusterman**  
FAMILY PHILANTHROPIES

**INASMUCH**  
FOUNDATION



  
**MORNINGCREST**  
HEALTHCARE FOUNDATION

- Cleveherd Charitable Fund
- Susannah and Jim Adelson Family Foundation

**If you want to provide support, please visit: [takecontrolok.org/donate](https://takecontrolok.org/donate).**

**THANK YOU**

TAKE  
CONTROL  
INITIATIVE 

**CONTACT US:**

TAKECONTROLOK.ORG

info@takecontrolok.org | 539.302.3615

IG: @iudecide | FB: @takecontrolinitiative | TikTok: @iudecide